

# Model 220

## High Accuracy Compression Load Cells



### Features

- Capacities: 5,000, 10,000, 20,000 & 30,000 kg (5, 10, 20 & 30 tons)
- Stainless steel construction
- Small size, low profile
- Current matched and rationalized
- Fully welded, providing IP68 protection
- OIML R60 approved, to 4000 divisions
- Hazardous area approved to EEx ia IIC T6

Model 220 is a low profile bending ring load cell designed for high capacity weighing applications, including weighbridges, tanks, silos and high capacity platform scales as well as force measurement.

Its small physical size, combined with high accuracy and low cost, makes this load cell ideally suited for modern low profile designs in both approved applications and process weighing.

This high accuracy load cell is OIML R60 approved to 4000 divisions. For hazardous environments, this load cell has an EEx ia IIC T6 approved option. When combined with Tedeo-Huntleigh mounting accessories, this load cell will provide a simple, accurate and reliable weighing system.

The two additional sense wires feed back the voltage reaching the load cell. Complete compensation of changes in lead resistance due to temperature change and/or cable extension, is achieved by feeding this voltage into the appropriate electronics.



EXCELLENCE IN LOAD CELLS

#### Contact Info

E-mail  
sales@tedea-huntleigh.com  
Website  
www.tedeo-huntleigh.com

**Europe**  
Tedeo-Huntleigh  
Europe Ltd.  
37 Portmanmoor  
Road  
Cardiff  
CF24 SHE

**International**  
Tedeo-Huntleigh Inter-  
national Ltd.  
5 Hozoran St.  
New Industrial Zone  
P.O. Box 8381, Netanya  
42506

**China**  
Beijing Tedeo-Huntleigh  
No. 16 Hong Da Bei Lu  
Da Xing County, Beijing  
Economic & Technology  
Development Area,  
Beijing 100176  
Tel:+86-10-67881604-

**Germany**  
Tedeo-Huntleigh  
GmbH.  
Mumlingweg 18  
D-64297  
Darmstadt-  
Eberstadt

**France**  
SEEA sa  
16 Rue Francis  
Vovelle  
28000 Chartres  
France

20630 PLUMMER ST  
CHATSWORTH CA 91311  
USA

TEL: 800.626.2616  
FAX: 818.701.2799

# Model 220

# High Accuracy Compression Load Cells

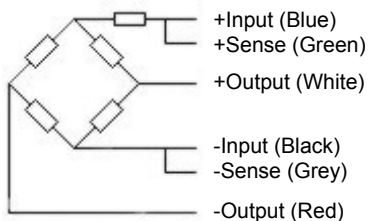
GRADE	C1	C3	C4	UNITS
Rated Capacities	5,000, 10,000, 20,000, 30,000			kg
Rated Output	2.0 ± 0.1%			mV/V
Total Error*	0.050	0.020	0.017	±% of Rated Output
Zero Return after 30 mins	0.050	0.017	0.013	±% of Applied Load
Temperature Effect: On Output	0.0040	0.0010	0.0010	±% of Applied Load / °C
Temperature Effect: On Zero	0.0028	0.0009	0.0010	±% of Rated Output / °C
Zero Balance	3.0	2.0		±% of Rated Output
Temperature Range: Operating	-30 to +70			°C
Temperature Range: Compensated	-10 to +40			°C
Safe Overload	150			% of Rated Capacity
Ultimate Overload	300			% of Rated Capacity
Excitation: Recommended	10			Volts AC or DC
Excitation: Maximum	15			Volts AC or DC
Input Impedance	1065 ± 50			Ohms
Output Impedance	1000 nominal			Ohms
Insulation Impedance	>2000			Mega Ohms
Deflection at Rated Capacity	<0.5			mm
Weight	1.10 (5T), 1.50 (10T), 3.25 (20 & 30T)			kg
Construction	Stainless Steel			
Environmental Protection	IP68			
Cable	5m (5T), 10m (10 & 20T) 20 Meters (30T), 6 Wire PU, Double Screened			
Approvals	OIML R60 (4000 divisions)			

\*Total Error - According to OIML R60

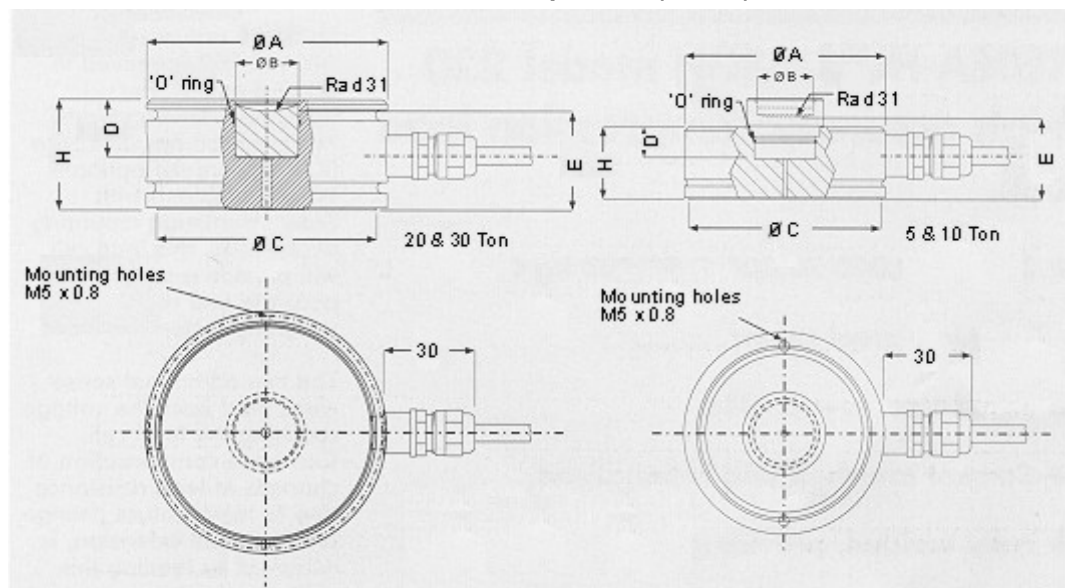
\*\* 30% minimum utilization

Standard minimum utilization 20% - Other utilization factors available upon request.

## Wiring Schematic Diagram



## Outline Dimensions All Capacities (in mm)



Product Weight (per capacity)	
5 ton	1.10 kg
10 ton	1.5 kg
20 -30 ton	3.25 kg

	ØA	ØB	ØC	D	E	H
5T	80.0	19	70	20	33.4	30
10T	92.0	28	80	14.6	33.4	33
20T	110	29	101.5	26.3	39	50
30T	110	29	101.5	26.3	39	50